

IGC PLENARY 2021



PROPOSAL 6.2.3 (ITA)
“RL Points for both crew members in 2-seaters”

Response by the IGC RL team
and the IGC Annex D Committee



Brief summary

- Recognize both pilots in two-seaters
- Award ranking points according to a formula

Assessment

- **The proposal has merit in its intention (but not solution)**
 - Right and just motivation, correct description of background problems
 - Fair and seemingly pragmatic solution with seemingly the desired outcome
- **However, implementation of the proposal raises significant issues**
 - Today: “one plane, one pilot” principle throughout all parts of the RL system
 - Former 20m RL was “shoe-horned” in, the team was actually a (as in 1) pilot
 - RL reads only first pilot from data provided by SeeYou/Strepla/Excel...
 - RL database only stores one pilot per result
 - RL algorithm only calculates with one pilot per result
 - RL webpage only handles one pilot per entry
 - The IGC RL team does not have the resources necessary to address all that
 - Implementing the proposed solution is labour-intense and costly
(We are not asking for more money)
 - This will not affect more than 95% of the results, only less than 5% might benefit
 - Today: 5 highest ranked pilots finishing in the upper half of result list determine competition rating: what if now P1 and P2 count both?
 - Complicated procedure for changing P2, putting more responsibility on CD and scorer
(This is already a bit tricky today)
 - Highly-ranked pilots get good ranking points more easily = risk reduction
 - Low-ranked pilots get a good boost to their own ranking = hitch-hiking

see data
next page

Recommendation

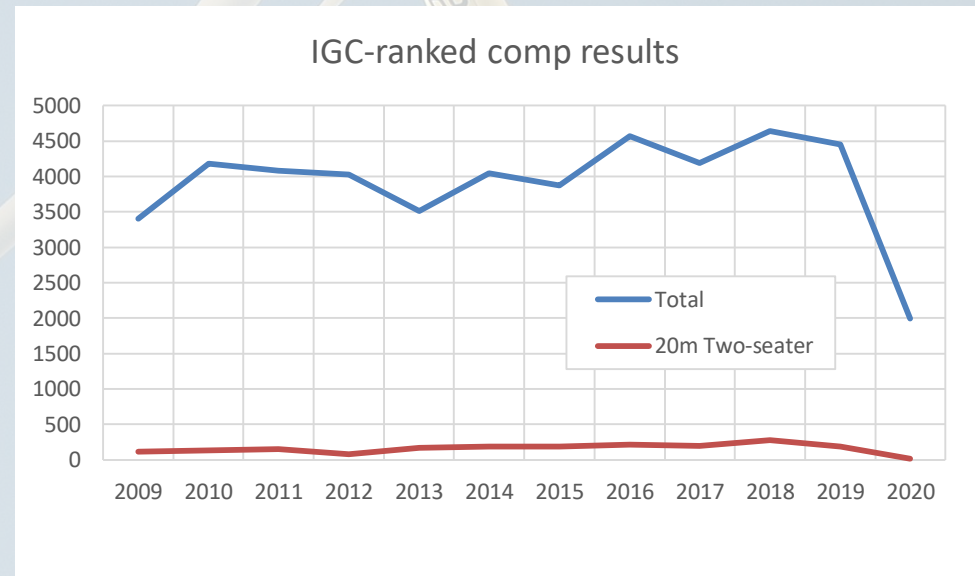
- Regretfully we recommend to reject the proposal (but keep on internal wish list)

Less than 5% affected

- Number of unique results in classes “20m” and “Two seater”
 - Not counting 20m two-seater planes participating in mixed classes
 - Not counting Open class two-seater planes
- But also:
 - Counting all 20m two-seater planes even though the issue the proposal wants to address is probably not a problem for everyone

*Good question:
will this only be applied
to pure two-seater comps or
also to mixed ones?
If so then these pilots have
an unfair advantage
due to decreased workload*

Season	Total # of results	Pure 20m Two seater	Ratio
2020	1991	17	1%
2019	4451	190	4%
2018	4642	280	6%
2017	4192	194	5%
2016	4569	217	5%
2015	3876	183	5%
2014	4045	191	5%
2013	3508	168	5%
2012	4024	78	2%
2011	4080	155	4%
2010	4184	130	3%
2009	3399	117	3%

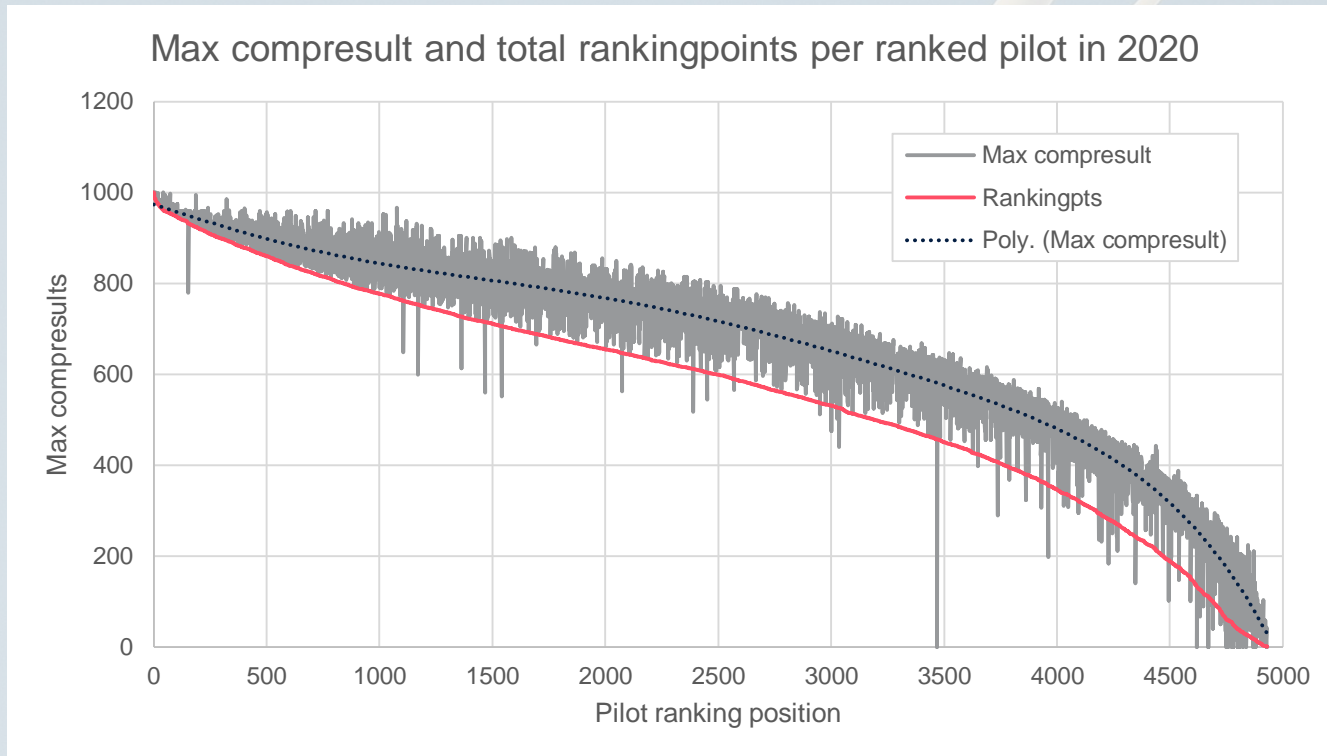


Recommendation

- Regretfully we recommend to reject the proposal (but keep on internal wish list)

Risk reduction and hitch-hiking

- Diagram shows maximum active compresult and total rankingpoints per pilot in 2020 sorted by current rank
- Example: median pilot with rank 2500 (600 ranking points)
 - got there by medium result in one medium-rated Cat2 event
 - can easily stay there forever or advance by hitch-hiking twice a year with better pilot
- Pilots ranked above median will have less motivation to fly on their own



Recommendation

- Regretfully we recommend to reject the proposal (but keep on internal wish list)